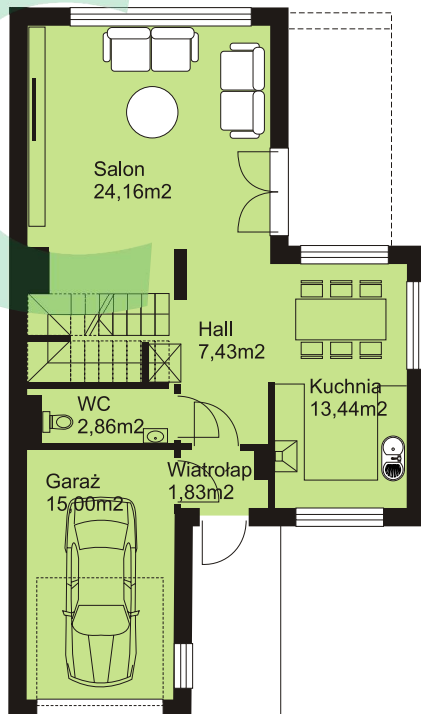
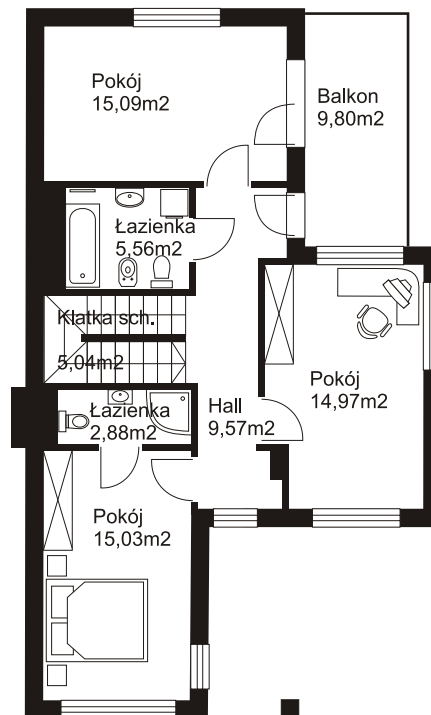


Parter



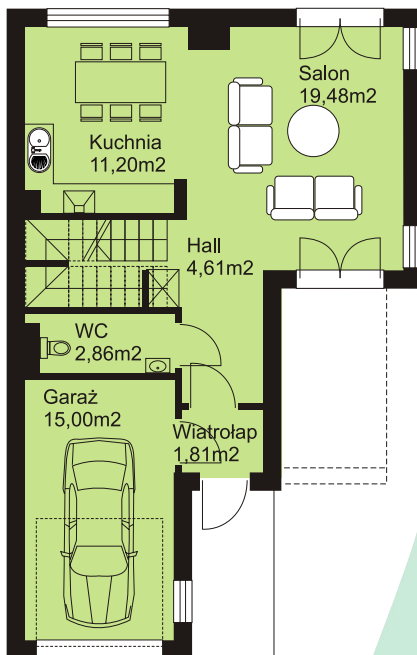
Piętro



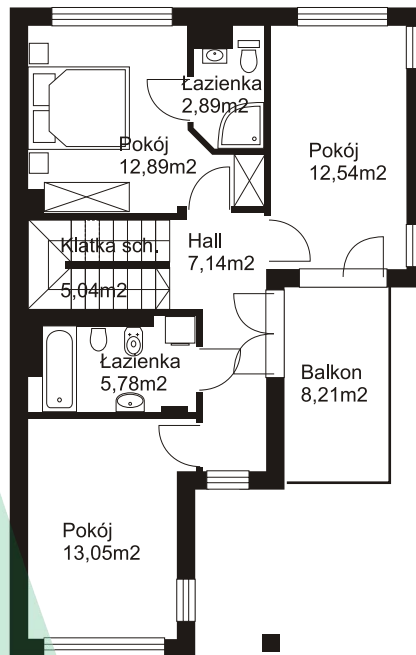
DOM C

$$117,86\text{m}^2 + 15,00\text{m}^2 = 132,86\text{m}^2$$

Parter



Piętro



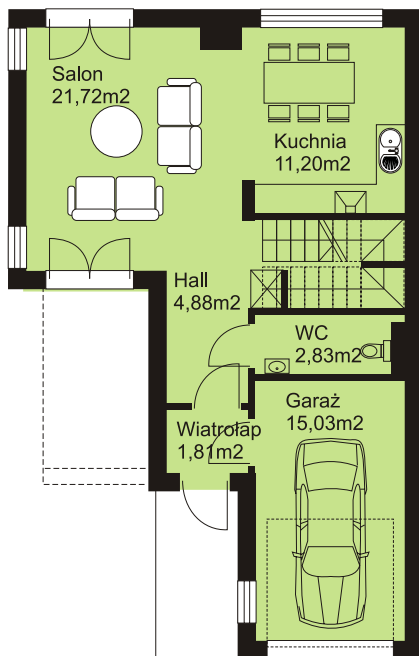
A

DOM A

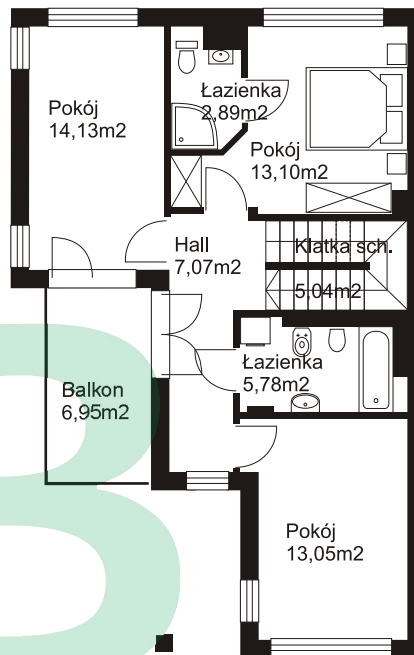
99,29m²+ 15,00m²

= 114,29m²

Parter



Piętro



DOM B

103,50m²+ 15,03m²

= 118,53m²